

REGION SOUTHERN LAKE STARNBERG / OSTERSEEN



**Hotel Marina Bernried \*\*\*\***  
82347 Bernried  
T +49 (0)8158 9320  
www.marina-bernried.de

**Hotel Seeblick**  
82347 Bernried  
T +49 (0)8158 2540  
www.seeblick-bernried.de

The Marina Resort with its remodelled restaurant is located right on the shore of Lake Starnberg and boasts large rooms for events and a varied cuisine.

A warm welcome awaits you at Hotel Seeblick, very close to the lake in the picturesque spa resort of Bernried. Still under private management, it is now in the fourth generation of the Lütjohann family.

LAKE STARNBERG REGION



**Golfhotel Kaiserin Elisabeth \*\*\*\***  
82340 Feldafing  
T +49 (0)8157 9309-0  
www.kaiserin-elisabeth.de

**Schlossgut Oberambach Biohotel + Vitalzentrum**  
82541 Münsing  
T +49 (0)8177 9323  
www.schlossgut.de

The hotel's unique charm, the idyllic gardens and the wonderful views of the lake are a guarantee for a quiet holiday in relaxing surroundings.

A country house in a picturesque and idyllic setting, surrounded by woods and fields, with a view of the lake. 5 seminar and conference rooms, perfect for focussed and creative work.

STAFFELSEE / MURNAU REGION



**Hotel Griesbräu zu Murnau \*\*\*\***  
82418 Murnau a. Staffelsee  
T +49 (0)8841 1422  
www.griesbraeu.de

**Hotel Post garni \*\*\***  
82418 Murnau a. Staffelsee  
T +49 (0)8841 487800  
www.hotel-post-murnau.de

Our family-run hotel in a historical building with its own brewery is located right in the middle of Murnau.

Situated in the pedestrian precinct and now in the 16th generation, the hotel offers guests an unforgettable stay with a blend of and contemporary styles.

KOCHEL- AND WALCHENSEE REGION

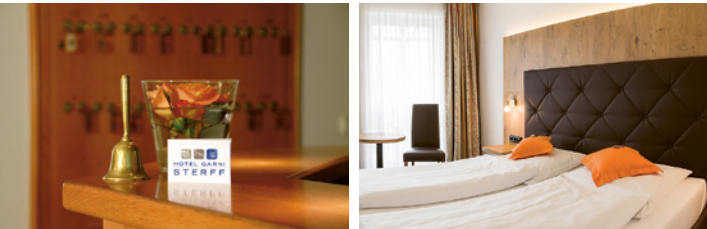


**Hotel Gasthof zur Post \*\*\***  
82431 Kochel am See  
T +49 (0)8851 92410  
www.posthotel-kochel.de

**Landhotel Herzogstand \*\*\***  
82431 Kochel am See  
T +49 (0)8851 324  
www.herzogstand.de

Traditional, family-run hotel in centre of Kochel am See with typically Bavarian cuisine.

Experience authentic, Bavarian hospitality and quiet, individually furnished rooms; extensive buffet breakfast. Just 800m from the Franz Marc Museum.



**Hotel Garni Sterff**  
82402 Seeshaupt am Starnberger See  
T +49 (0)8801 90630  
www.hotel-sterff.de

**Stadthotel Berggeist**  
82377 Penzberg  
T +49 (0)8856 8010  
www.hotel-berggeist.de

All rooms and holiday flats are cosily and comfortably furnished. Enjoy our hospitality in a family atmosphere!

The hotel has 45 cosily furnished rooms with telephone, flat-screen TV, minibar and WiFi. Guests can look forward to a varied and extensive buffet breakfast in the morning.

BICYCLE TOUR IN THE TRACKS OF THE 'BLAUER REITER'



Starting in Munich and taking in Bernried, Penzberg, Murnau and Kochel, explore the countryside by bike that so inspired Franz Marc, Gabriele Münter and Wassily Kandinsky. Route length: 180 km  
www.muSeenlandschaft-expressionismus.de

Kandinsky with his 'Phalanx' class in Kochel summer 1902  
Photo: Gabriele Münter  
Gabriele Münter- und Johannes Eichner Foundation, Munich

Our partner for organising tours for groups would be happy to help you plan your visit.  
Weilheimer Reiseservice GmbH  
82362 Weilheim  
T +49 (0)881 1062  
wmrs@derpart.com  
www.derpart.com/weilheim

ART AND CULTURE TOURS FOR GROUPS

TIPS FOR EXCURSIONS

**1 Lake trips**  
Take the museum's ship, the MS 'Phantasie', across Lake Starnberg to the Buchheim Museum.  
www.seenschiffahrt.de/starnberger-see

**2 Museum Starnberger See**  
Located in the historical Lochmann House, the collection focuses on life and culture on the lake in the 19th and 20th centuries.  
www.museum-starnberger-see.de

**3 Rose Island and Feldafinger Park**  
There are two masterpieces of landscape gardening on Lake Starnberg: Rose Island and Feldafinger Park, both designed by Peter Joseph Lenné.  
www.roseninselbayern  
www.schloesser.bayern.de

**4 Bernried on Lake Starnberg**  
Apart from the nearby Buchheim Museum, the gold-medal winner of Germany's 'Most Beautiful Village' competition boasts a lovely centre, an English-style landscaped park and a monastery complex – all right on the lake.  
www.bernried.de

**5 Kaiserin Elisabeth Museum**  
Collection on the Austrian Empress in the historical station building in Possenhofen.  
www.kaiserin-elisabeth-museum-ev.de

**6 Memorial chapel and cross**  
Some 10 years after the death

of King Ludwig II a memorial chapel was erected between 1896 and 1900 near Berg, above the place the king drowned. A wooden cross enshrined in iron marks the spot in the lake.  
www.vereinigung-ludwig-ii-deine-treuen.de

**7 Church of Christ the King and the Mosque in Penzberg**  
The dynamic former mining town offers a varied programme of events. Apart from the museum, a visit to the Church of Christ the King with its Campendonk windows, the Mining Museum and the impressive modern mosque are all a must.  
www.penzberg.de  
www.bergwerksmuseum-penzberg.de  
www.islam-penzberg.de

**8 Polling artists' village**

Yesteryear today. Former monastery buildings are home to studios, exhibitions and installations by contemporary artists as well as series of concerts of the highest standard.  
www.polling.de

**9 Artists' trail, Sindelsdorf**  
A walk through this pretty village, the birthplace and home of the 'Blauer Reiter' – first and foremost Franz Marc – to where the artists lived and where they found their motifs and created their works.  
www.sindelsdorf.de

**10 Münter Haus**

Gabriele Münter and Wassily Kandinsky lived together in this house from 1909 until 1914. This was where the almanac, 'Der Blaue Reiter' was created, among other works of art.  
www.muenter-stiftung.de  
www.murnau.de

**11 Murnau pedestrian precinct**  
Remodelled by Emanuel von Seidl, this colourfully painted listed ensemble with its many little shops and cafés is now a conservation area.  
www.murnau.de

**12 Murnau Moor**  
Thanks to its size, varied landscape and its flora and fauna, this wetland moor area forms a unique entity in central Europe.  
Tourentipps: www.murnau.de

**13 Staffelsee**  
With its seven islands and warm water this is one of the most popular lakes for swimming. Our tip: Walk the hiking trail or take a trip on the motor launch.  
www.staffelsee.org

**14 Murnau art trail**  
Look for the original motifs used by Gabriele Münter and Wassily Kandinsky and compare them with their paintings on a walk around the town of Murnau.  
www.murnau.de

Soar into the blue Bavarian sky and enjoy the unique 360° views over turquoise-coloured lakes and blue mountain peaks. The panoramic nature trail and a break at the mountain guesthouse at both well worthwhile.  
www.herzogstandbahn.de

**19 The Church of Wies UNESCO World Heritage Site**  
The pilgrimage church of Wies dedicated to 'the Scourged Saviour' is considered the most perfect example of Bavarian Rococo architecture.  
www.wieskirche.de

**20 Andechs Abbey**

Located on the 'Holy Mountain' on the east shore of Ammersee, Andechs is the oldest place of pilgrimage in Bavaria and, since 1850, has been a Benedictine priory affiliated to the Abbey of St. Boniface in Munich. Independent of other business, the abbey brewery is still run by the religious order.  
www.andechs.de

**21 Weilheim**  
The lively Old Town of Weilheim with its restored patricians' houses, partly surrounded by the ancient town walls, is an inviting place to stroll and shop.  
www.weilheim.de

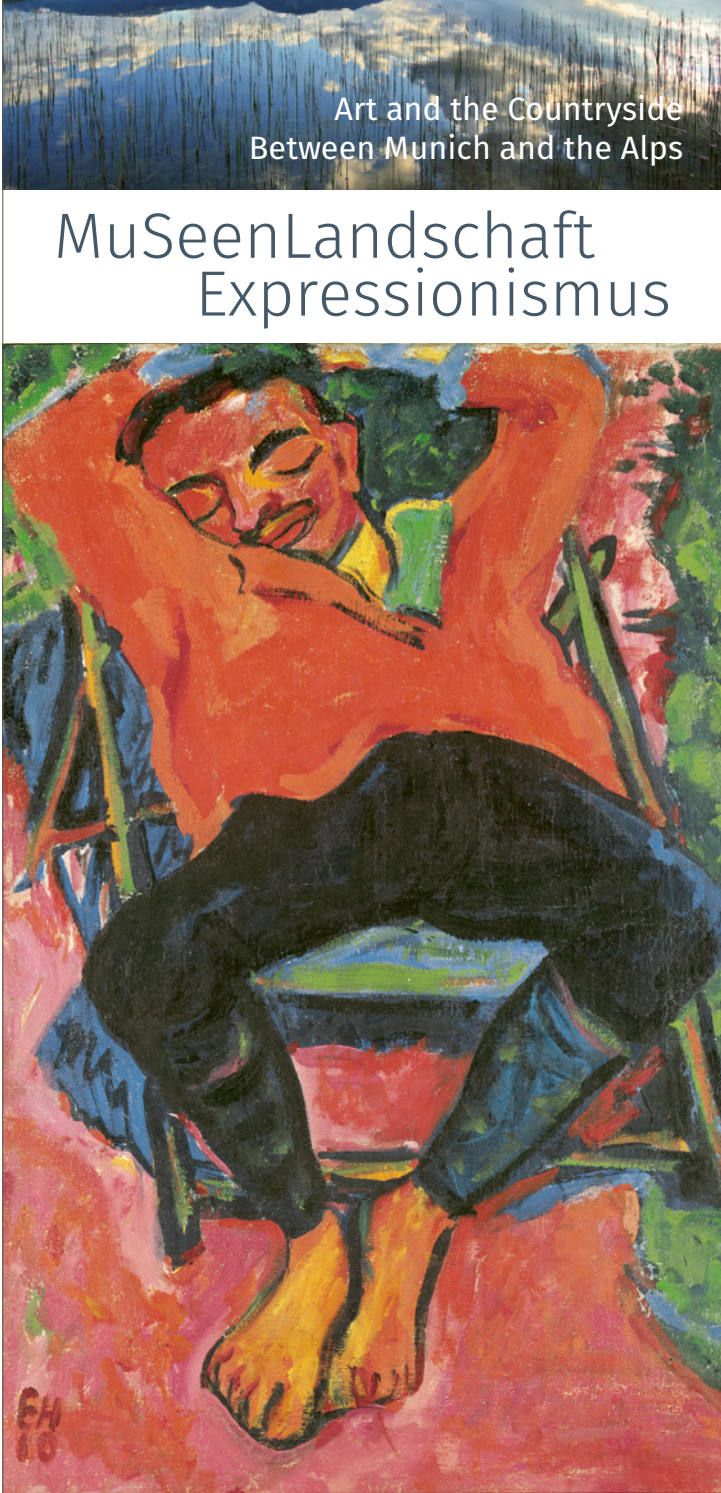
**22 Viktualienmarkt Munich**  
The 'Viktualienmarkt' is a popular culinary meeting place in the heart of the city where you can sit around the maypole amidst a sea of colours, scents and sounds. This is where fruit, vegetables and all conceivable types of delicacy can be bought for later ... or eaten straight away.  
www.simply-munich.com

**23 'Fünf Höfe', Munich**  
Up-market designer stores and cafés, bars and restaurants are an open invitation to shop in an unusual atmosphere. The 'hanging gardens' create a vivid, tropical flair right next to the Hypo Kunsthalle where temporary exhibitions of a high standard are held in this central location.  
www.simply-munich.com

**24 Schwabing, Munich**  
This lively district that has been shaped by artists since time immemorial calls out to be explored. In the streets and cafés around the Academy of Fine Arts, right up as far as

Münchner Freiheit, this is where you will find yourself among students and creative minds, and is where the 'Blauer Reiter' artists used to meet.  
www.simply-munich.com

**25 Nymphenburg Palace and the palace park**  
This magnificent palace and its extensive park are a *gesamtkunstwerk* of international importance. The palace, park and the Café Palmenhaus are worth a visit whatever the weather – just as in the days of kings and nobles.  
www.simply-munich.com



**BUCHHEIM MUSEUM**  
Am Hirschgarten 1  
82347 Bernried  
T +49 (0)8158 9970-0  
www.buchheimmuseum.de

**MUSEUM PENZBERG**  
SAMMLUNG CAMPENDONK  
Am Museum 1  
82377 Penzberg  
T +49 (0)8856 813-480  
www.museum-penzberg.de

**FRANZ MARC MUSEUM KOCHEL AM SEE**  
Franz-Marc-Park 8-10  
82431 Kochel a. See  
T +49 (0)8851 92488-0  
www.franz-marc-museum.de

**Schloßmuseum Murnau**  
Schloßhof 2–5  
82418 Murnau a. Staffelsee  
T +49 (0)8841 476-207  
www.schlossmuseum-murnau.de

**starnberg ammersee**  
Tourist Information Starnberg  
Hauptstraße 1, 82319 Starnberg  
T +49 (0)8151 9060-0  
touristinfo@starnbergammersee.de  
www.starnbergammersee.de

**Pfaffenwinkel**  
Käuflich Oberbayern  
Tourismusverband Pfaffenwinkel  
Bauerngasse 5, 86956 Schongau  
T +49 (0)8861 211-3200  
info@pfaffen-winkel.de  
www.pfaffen-winkel.de

**Kochel a. See Walchensee**  
Tourist Information Kochel a. See  
Bahnhofstraße 23  
82431 Kochel a. See  
T +49 (0)8851 338  
info@kochel.de, www.kochel.de

**Murnau am Staffelsee**  
Tourist Information Murnau  
Untermarkt 13, 82418 Murnau  
T +49 (0)8841 476-240  
touristinfo@murnau.de  
www.murnau.de

**OUTLINE MAP**

**IMPRINT**  
2020  
Published by MuSeenLandschaft Expressionismus:  
Tourist information offices of Kochel a. See, Murnau, Starnberg, Tourismusverband Pfaffenwinkel, München Tourismus, Lenbachhaus München, Buchheim Museum, Museum Penzberg – Sammlung Campendonk, Schloßmuseum Murnau, Franz Marc Museum.  
Design: blist grafik & illustration, Munich  
Editing: WENGMANN Kulturmanagement, Munich  
Printing: Kriechbaumer Druck GmbH & Co. KG

Picture credits  
Cover: Erich Heckel, Sleeping Pechstein, 1910 (Detail), Estate of Erich Heckel, Hemmenhofen, Buchheim Museum Bernried | Staffelsee: Photo Florian Werner | Werdenfels line: Photo Uwe Miethe | Franz Marc Museum + Kochel- and Walchensee: Tourist Information Kochel a. See, Photo Thomas Kujat | Lake Starnberg: Tourist Information Starnberg | Buchheim Museum der Phantasie: Photo Julia Rejmer Lenbachhaus: © Florian Holzherr | Munich: München Tourismus, Photo Thomas Klinger

**Hotel Waltraud Garni \*\*\***  
82431 Kochelsee  
T +49 (0)8851 333  
www.waltraud-hotel.de

A comfortable, country-style hotel where you will feel at home and can relax. Treat yourself to a delicious buffet-breakfast on the terrace with beautiful views of the mountains.

**Seehotel Grauer Bär \*\*\***  
82431 Kochel am See  
T +49 (0)8851 92500  
www.grauer-baer.de

Located right on the lake with a spa and relaxation area with panoramic views, restaurant and lakeside terrace. Just a few minutes walk from the Franz Marc Museum.

**Hotel Alpenhof Postillion \*\*\*\*s\***  
82431 Kochel am See  
T +49 (0)8851 182-0  
www.alpenhofpostillion.com

Enjoy the best the region has to offer in summer and in winter! Extensive, healthy breakfast buffet, 'Postillion' café restaurant, indoor swimming pool, holiday flats.



MuSeenLandschaft  
Expressionismus

One of the most beautiful regions in Germany lies between the Bavarian capital and the Alps. The lush green moraine landscape with its crystal clear rivers and stunning views of the majestic mountains inspired the writer Ludwig Thoma to exclaim: "Just open your eyes; everything is beautiful!"

In the early 20th century the young Expressionists from Munich came here to paint the countryside in bold colours and shapes. Emil Nolde and Ernst Ludwig Kirchner stayed here before the 'Brücke' group of artists was established in Dresden. The 'Blauer Reiter' artists Wassily Kandinsky, Gabriele Münter, Franz Marc, Alexej von Jawlensky and Heinrich Campendonk all had particularly closely ties to this region.

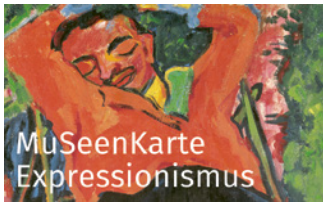
'MuSeenLandschaft Expressionismus' provides a unique way to experience and enjoy both art and the countryside. The Buchheim Museum of Imagination with its world-famous Expressionist works draws visitors to the shore of Lake Starnberg, the Franz Marc Museum on Kochelsee provides an exquisite insight into the artist's oeuvre, and the Schloßmuseum Murnau on Staffelsee with its works by Gabriele Münter and other 'Blauer Reiter' artists and the Museum Penzberg – Sammlung Campendonk, near the Osterseen group of lakes, are both major attractions too. And if you visit the Pinakothek der Moderne and the Lenbachhaus in Munich as well you will be able to marvel at an unparalleled number of works by the pioneers of German Modernism.

MuSeenLandschaft PLUS

Partner hotels | Tips for excursions

Information about partner hotels and suggestions for other excursions in the MuSeen-Landschaft region can be found on the back of this flyer.

MuSeenKarte Expressionismus



With the 'MuSeenKarte Expressionismus' ticket you can explore the museums in the foothills of the Bavarian Alps. Pay the standard admission fee at the first museum and visit three other museums at reduced rates. Tickets are available free of charge at participating museums.



Trains on the Werdenfels line run every hour from Munich to the 'MuSeenLandschaft Expressionismus' museums. The museums can easily be reached on foot from each respective station. The routes are signposted. Timetables: [www.bahn.de/werdenfelsbahn](http://www.bahn.de/werdenfelsbahn)

MURNAU – THE ARTISTS' TOWN ON STAFFELSEE

On the trail of Wassily Kandinsky and Gabriele Münter

Nature, art and culture go hand in hand in Murnau. The picturesque area with expansive views of the Alpine range and its changing shimmering blue light, the moor around



Murnau and the lake – Staffelsee – inspired the world-famous 'Blauer Reiter' artists. Franz Marc even named the region 'the Blue Land'. The pedestrian precinct with its listed buildings remodelled by Emanuel von Seidl, street cafés and shops has a southern flair and a view of the mountains, inviting visitors to while away the time. The Schloßmuseum in the castle in the centre of the town houses an exceptional collection. Its core comprises works by Gabriele Münter, the artists of the 'Neue Künstlervereinigung München' and the 'Blauer Reiter' – including Kandinsky, Marianne von Werefkin and Alexej von Jawlensky. The works exhibited show the motifs the artists found for their pictures in Murnau and the surrounding area from 1908



Gabriele Münter  
Self-Portrait, 1909  
Schloßmuseum Murnau  
© VG Bild-Kunst  
Bonn 2020



Schloßmuseum Murnau

onwards, how they became familiar with Bavarian folk art – especially reverse glass painting – and how they succeeded in taking that decisive artistic step towards a new expressive form of painting.

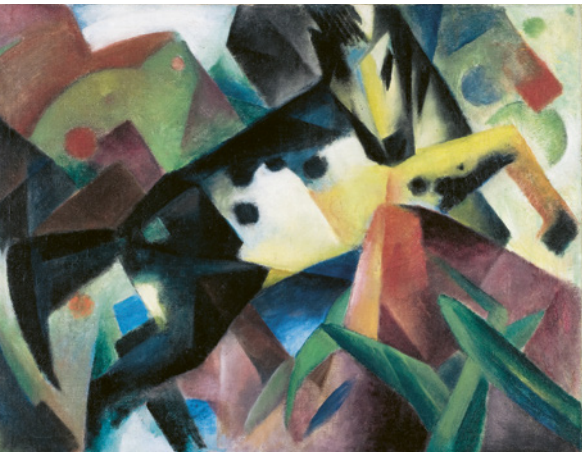
BETWEEN THE LAKES  
KOCHELSEE AND WALCHENSEE

Experience the world of Franz Marc and the Modernists



For Franz Marc, the 'Blue Land' – the idyllic and breathtaking stretch of countryside between Kochel, Murnau and Sindelsdorf with its lakes, moorland, hills and mountain slopes – was not just a place to breathe the country air or a destination for a day-trip. He had known it since childhood and he came back here time and again. In 1914, two years before his death, he bought a house in Ried, near Kochel, for himself and his wife Maria. The 'Blue Land' is not just inextricably linked to the 'Blauer Reiter' by name. The area around Kochel that Marc loved so much was also the starting point and source of inspiration for his art. For this reason the Franz Marc Museum in Kochel am See was founded in 1986 to present Marc's work in the surroundings that influenced him as an artist. Apart from important works by Franz Marc himself, paintings by Wassily Kandinsky, Alexej Jawlensky, August Macke and Gabriele Münter can also be seen. They mirror a fascination for a landscape that not only has a lot to offer art lovers. The foothills of the Bavarian Alps are

an idyllic stretch of countryside, set against the magnificent backdrop of the mountains – a perfect place to relax or hike. The lakes in Kochel and Walchensee are an invitation to swim or windsurf, to sample the cosy restaurants and hotels and to recharge one's batteries.



Franz Marc Museum – Art in the 20th Century

Franz Marc, Leaping Horse, 1912  
Franz Marc Museum Kochel a. See  
On loan from a private collection

THE FIVE LAKES' REGION  
AROUND STARNBERG

Lakeside 'Laboratory of the Imagination'

The Five Lakes' Region is the most popular destination for day-trips from Munich. The lush green hills and the streams, rivers and lakes – Starnberger See, Ammersee and their smaller siblings Pilsensee, Wörthsee and Weißlinger See – offer



breathtaking views of the Alps. Unspoilt farming villages, grand villas, Baroque churches, monasteries and castles characterise this unique area. 100km of lakeshore, 180km of hiking trails, 250km of cycle paths as well as lakeside beaches and boat trips make this area a real eldorado for holiday-makers. Andechs Abbey, the minster in Dießen, the castle in Seefeld, the palace and Kaiserin Elisabeth Museum in Possenhofen are all attractions for the culturally interested. One undoubted highlight is the Buchheim Museum of the Imagination that Günter Behnisch, the architect of the Olympic Park in Munich, composed for a site in Bernried right on the edge of the lake. In addition to the famous collection of Expressionist works amassed by the author of The Boat, Lothar-Günther Buchheim, curios-



Alexej von Jawlensky  
Head in Blue, 1912  
Buchheim Museum  
der Phantasie



Buchheim Museum der Phantasie

ities collected from around the world are a true eye-opener. Children love the mini circus, the submarine car, the brightly coloured helicopter and the 'Laboratory of the Imagination' where they can clamber around or make their own things. An impressive list of events, focussing on Hundertwasser or Nolde for example, attracts crowds of visitors the whole year round. The romantic park surrounding the museum is perfect for a picnic.

PENZBERG NEAR THE PICTURESQUE OSTERSEEN LAKES

Discover where Heinrich Campendonk found inspiration



The area around the Osterseen lakes that stretches from Lake Starnberg southwards to the undulating foothills around Penzberg, is one of nature's real treasure troves. The 19 lakes near Iffeldorf present an impressive spectrum of colours, from silver-grey to turquoise green, set against the incomparable panorama of the Alps – a magical landscape that attracted Franz Marc to Sindelsdorf at the beginning of the 19th century. And with him his artist friends Kandinsky, Jawlensky and Münter who often spent time in the summerhouse in his garden. In 1911, at the age of 21, Heinrich Campendonk (1889–1957) came to Upper Bavaria from the Rhineland and became the youngest of the 'Blauer Reiter' artists. During his search for motifs for his paintings he was impressed by the mining town of Penzberg with its miners' houses and pitheads. His paintings from this phase were only the start of his own very independent artistic output which continued into the 1950s. Since 2016 the new Museum Penzberg –



Heinrich Campendonk, Lovers  
(Adda and Heinrich), 1912  
Museum Penzberg –  
Sammlung Campendonk  
© VG Bild-Kunst, Bonn 2020

Museum Penzberg – Sammlung Campendonk

MUNICH – THE CITY OF  
ART AND CULTURE

Following the tracks of the great Expressionists

A wealth of top-class museums and collections, displaying exhibits from Antiquity to the present day, are waiting to be explored in Munich. For many centuries, the Bavarian royal family, the Wittelsbachs, promoted the arts in the city that now boasts a centrally located 'Kunstareal' art hub with museums of world renown.



This is where you will find the largest collection of works by the 'Blauer Reiter' movement, for example. The museum, partly housed in the former residence of the 'princely painter' Franz von Lenbach with its idyllic garden, is one of the most beautiful spots in the city. The house in the style of a Tuscan villa forms a stunning counterpoint to the new, gleaming golden building designed by the architectural firm Foster + Partner. Following the gift made by the artist Gabriele Münter in 1957, the museum now holds works by Wassily Kandinsky, Gabriele Münter, Alexej von Jawlensky, Marianne von Werefkin, Franz Marc, Paul Klee, August Macke and many others. Under the name the 'Blauer Reiter', the history of this

group of Expressionist artists found its beginnings in Munich. Today, world-famous works of art such as the 'Blue Horse' can be admired in the Lenbachhaus. The museum café, with a lovely view of the Propylaea and the Königsplatz, is an inviting place for animated discussions on what you have seen and experienced.



Franz Marc  
Blue Horse, 1911  
© Lenbachhaus



Lenbachhaus München